



Hardware – Software – Consumables

Technology that excites

Edition 4

Made in Germany

Engineering and Manufacturing



For more than 25 years cab has been developing and manufacturing product identification equipment for industry, trade and service markets.

Continuous new requirements initiated by the market's complex demand influence the design and innovation of future products. Experience and the determination to steadily improve and simplify our products has made cab one of the leading manufacturers worldwide.

Our products are manufactured entirely in Germany in our own facilities. This assures quality management from raw material testing through every step of production right up to the finished product.

Please find in the following a portfolio of our current products.

Transfer Printers – A-Series + M4	4/5
Transfer Printers – classic models	6
Applicators – A-Series and Apollo	7
Transfer Printers – Hermes	8
Applicators – Hermes	9/10
Label Dispenser	11
External Rewinders	11
Labels and Ribbons	11
Label Software	12
Scanners	13
Marking Laser	14

A-Series + M4

The A-series incorporates leading technology to produce a complete printer family which provides a solution for the entire range of labeling and product identification needs.

This series is characterized by compact, asthetically pleasing yet rugged printers with more than 30 innovations. A RFID model for the A3 is under construction as well.



m4

The printer which is easy to use, and prints fast and easy under any MS Windows application.



a2

First Quarter 2004

The small printer system for narrow labels which prints with 203 or 300 dpi resolution – most flexible, and designed for industrial applications.



a3

The inexpensive all purpose printer system which prints with 203 or 300 dpi resolution – most flexible, and designed for industrial applications.

Printhead	M4		A2		A3	
Based on			thick film			
Printhead resolution dpi	203	300	203	300	203	300
Print speed mm/s	150	100	200	150	200	150
Print width up to mm	104	108,4	52	54	104	108,4
Label width in mm	12 – 116		12 - 60		12 - 116	
Label height in mm			5 – 1000			
Roll diameter in mm			210			
Length up to m			500			
Memory (RAM)			8 MB			
Slot for memory card			■ CompactFlash Type I 16 up to 512 MB			
Serial RS232 C	–		■			
Serial RS422, RS485	–		□			
Parallel Centronics	■		■ bi directional			
Ethernet	■		□			
USB to connect PC	–		□			
Twinax/Coax Converter	–		□			
Connection PC, keyboard/scanner			■ USB			
Linear barcodes			All standard barcodes			
2D-barcodes			Data Matrix, PDF 417, Micro PDF, UPS Maxicode, QR-Code			
Cutter			□			
External rewinder			□			
External unwinder	–		□			
RFID			□			
Height x width x depth in mm	274 x 242 x 446		274 x 187 x 446		274 x 242 x 446	



a4



**a4
600**



a6



a8

The fastest printer of the series, prints up to 25 mm per second. This model handles large throughput with the highest precision.

The precise printer for small layouts. 600 dpi resolution – excellent for graphics and barcodes. Mostly used for serial tags.

The printer for wide labels up to 166 mm with high resolution and top speed. The price performance ratio makes this model unbeatable.

For really wide labels up to 220 mm. Fits everywhere and is a surprisingly good value. Mostly used for chemical and pallet labels.

	A4	A4 600	A6	A8
Printhead	thin film		thick film	
Based on			300	
Printhead resolution dpi	300	600		
Print speed mm/s	250	100	200	150
Print width up to mm	105,6	105,6	162,6	216
Labels				
Label width in mm	12 - 116		50 – 176	50 – 220
Label height in mm	5 - 1000	5 – 250	6 – 1000	10 – 650
Roll diameter in mm	210			
Ribbon				
Length up to m	500			
Electronics				
Memory (RAM)	16 MB			
Slot for memory card	■ CompactFlash Type I up to 512 MB			
Interface				
Serial RS232 C	■			
Serial RS422, RS485	□			
Parallel Centronics	■ bidirectional			
Ethernet	□			
USB to connect PC	□			
Twinax/Coax Converter	□			
Connection PC, keyboard/scanner	■ USB			
Barcodes				
Linear barcodes	All standard barcodes			
2D-barcodes	Data Matrix, PDF 417, Micro PDF, UPS Maxicode, QR-Code			
Accessories				
Cutter	□			
External rewinder	□			
External unwinder	□			
RFID	□			
Dimensions				
Height x width x depth in mm	274 x 242 x 446		274 x 302 x 446	274 x 352 x 446

Classic models

The classic printer models – the Gemini and Apollo series – prove to be systems with above-average performance and superior features. Whether talking about the e2 starter model or the Apollo 1 with ribbon saver, cab has a solution for any application.



e2

The small and inexpensive one. Space-saving with highest performance. For small label sizes and low volume.



Gemini T

The inexpensive strong starter model for creating labels under Windows applications.



Apollo 1

The most accurate label printer with an integrated ribbon saver, in a metal housing. Saves ribbon from a printing area above 12 mm.

	e2	Gemini T	Apollo 1
Printhead			
Based on	thin film	thin film	thin film
Printhead resolution dpi	203	200	300
Print speed mm/s	76	70	200
Print width up to mm	105	104	108
Ribbon saver	–	–	–
Labels			
Label width in mm	25 – 110	25 – 116	12 – 116
Label height in mm	10 – 1143	6 – 300	5 – 546
Roll diameter in mm	109	150	200
Ribbon			
Length up to m	91	360	360
Electronics			
Memory (RAM)	512 KB	256 KB	2 MB
Slot for memory card	–	–	■ PCMCIA up to 4 MB
Interface			
Serial RS232 C	■	–	■
Serial RS422, RS485	–	–	■
Parallel Centronics	■	■	■
Ethernet	–	–	–
USB to connect PC	–	–	–
Twinax/Coax Converter	–	–	□
Connection PC keyboard/scanner	–	–	□
Barcodes			
Linear barcodes	All standard barcodes	All standard barcodes	All standard barcodes
2D-barcodes	PDF 417, UPS Maxicodes	PDF 417	Data Matrix, PDF 417, UPS Maxicodes
Accessories			
Cutter	On demand	–	□
External rewinder	–	–	□
Internal rewinder	–	–	–
Present sensor	On demand	–	□
Dimensions			
Height x width x depth in mm	153 x 186 x 278	225 x 234 x 332	280 x 250 x 458

Printing and labeling in real time

The applicators for the A-Series and Apollo transfer printers have been designed for the semi-automatic and precise labeling of name plates and packaging labels. In this process the work piece is manually placed into a labeling device. However, the print and apply systems may also be integrated into automated production lines.



Type 3200/3100 Type 1100/1200/2100 Type 1100 RE Type A1000

Label transfer method

Tamp/Blow

Due to the applicator's swinging of 90° labels may be tamped or blown sideways on the product.

Tamp/Blow

For tamping or blowing labels on flat surfaces for label heights of up to 80 mm i.e. 20 mm.

Roll on

For rolling on labels on cylindrical objects. The label is placed on the object and then rolled on by the rotating motion of the product.

Tamp/Roll on/Blow

With the applicators of the A-Series all label transfer methods are possible as with the Apollo. New features are the compressed air control unit and the soft start function.

Label transfer method	3200	3100	1100	1200	2100	1100 RE	Type A1000		
	Tamp	Blow	Tamp	Tamp	Blow	Roll on	Tamp	Roll on	Blow
Label width mm	12 – 112		12 – 112			12 – 112	25 – 116	25 – 116	25 – 90
Label height mm	5 – 70	12 - 70	5 – 80	5 - 20	20 - 80	5 – 80	25 – 150	50 - 150	25 - 90
Stroke of tamp mm	10	-	up to 300	300	300	100 – 300	up to 300		
Compressed air supply bar	5 – 6		5 – 6			5 – 6	6 -8		
Requirements on labeling surface	flat		flat			cylindrical	flat		
Product height									
variabel	–		■	■	–	–	■	■	–
fixed	■		–	–	■	■	–	–	■
Product									
fixed	■	■	■	■	■	–	■	–	■
in motion	–	■	–	–	■	–	–	■	■
in rotation	–	–	–	–	–	■	–	–	–
Labeling direction									
vertical from above	–	–	■			■	■		
vertical from below	■	–	–			–	–		
horizontal	■	■	–			–	–		
around corner	–	–	–			–	–		

Hermes

The Hermes transfer printers have been designed specifically for fully-automatic labeling in industrial applications. The printers may be integrated in any orientation.

The precision design guarantees accurate print with exceptional label registration.


Hermes 4F

Hermes 4R

Hermes 5F

Hermes 5R
Label outlet towards
Left

For label rolls up to a diameter of 200 mm. Dispensing direction to the left in any orientation.

Right

For label rolls up to a diameter of 200 mm. Dispensing direction to the right in any orientation.

Left

For label rolls up to a diameter of 300 mm. Dispensing direction to the left in any orientation.

Right

For label rolls up to a diameter of 300 mm. Dispensing direction to the right in any orientation.

	Hermes 4F	Hermes 4R	Hermes 5F	Hermes 5R
Printhead				
Based on	thin film			
Printhead resolution dpi	300			
Print speed mm/s	200			
Print width up to mm	108			
Labels				
Label width in mm	12 – 116			
Label height in mm	4 – 546			
Roll diameter in mm	200		300	
Ribbon				
Length up to m	360/450			
Electronics				
Memory (RAM)	2 MB			
Slot for memory card	■ PCMCIA up to 4 MB			
Interfaces				
Serial RS232 C	■			
Serial RS422, RS485	■			
Parallel Centronics	■			
Interface for cab applicators	■			
Interface for other users	■			
Sensor "out of labels"	■			
Sensor "out of ribbon"	■			
Indicator light	■			
Barcodes				
Linear barcodes	All standard barcodes			
2D-barcodes	Data Matrix, PDF 417, UPS Maxicode			
Accessories				
Sensor "out of labels"	□			
Sensor "out of ribbon"	□			
Indicator light	□			
Present sensor	□			
Dimensions				
Height x width x depth in mm	417 x 277 x 420		569 x 277 x 542	

The applicators enable labels to be applied downwards, sideways as well as upwards on to the product. Almost all applications are performed in real time.

In this process the labels are taken directly from the printer by the tamp pad, and attached to the object. The size of the tamp pad is customized to any label dimension.



Type 1100/2100



Type 1200



Type 1300



Type 1500

Label transfer method

Tamp/Blow

For delicately applying labels, i.e. blowing labels on flat surfaces up to a height of 80 mm.

Tamp

For applying small labels, even on recessed surfaces, label height up to 20 mm.

Tamp

For applying larger-sized labels, even on inclined surfaces, label height up to about 200 mm.

Tamp

For wrapping larger-sized labels around the corner, i.e. sealing or warranty labels, label height up to 200 mm.

Label transfer method	1100 Tamp		2100 Blow	1200 Tamp	1300 Tamp	1500 Tamp
Label width mm	8 – 112		10 - 112	8 – 112	75 – 112	40 – 112
Label height mm	5 – 80		10 - 80	5 – 20	80 – 200	40 – 200
Stroke of tamp mm	100 - 400			100 – 400	100 – 400	100 – 400
Compressed air supply bar	5 – 6			5 – 6	5 – 6	5 – 6
Requirements on labeling surface	flat			flat	flat	flat/right angle
For transfer printers						
Hermes 4F - label outlet left (F)		■		■	■	■
Hermes 4R - label outlet right (R)		■		■	■	■
Hermes 5F - label outlet left (F)		■		■	■	■
Hermes 5R - label outlet right (R)		■		■	■	■
Product height						
variabel	■	–		■	■	■
fixed	–	■		–	–	–
Product						
fixed	■	■		■	■	■
in motion	–	■		–	–	–
in rotation	–	–		–	–	–
Labeling direction						
vertical from above		■		■	■	■
vertical from below		■		■	■	–
horizontal		■		■	■	■
around corner		–		–	–	■

Applicators

Hermes

The applicators enable labels to be applied downwards, sideways as well as upwards on the product. Almost all applications are performed in real time.

In this process the labels are taken directly from the printer by the tamp pad, and attached to the object. The size of the tamp pad is customized to any label dimension.



Type 3200/3100

Type 4200

Type 1400

Type 5100

Label transfer method

Tamp/Blow

Due to the applicator's swinging of 90°, labels may be tamped or blown sideways on the product.

Tamp

For applying small labels with label height from a size of 4 mm on, tamp rotating up to 90° to the printing direction is possible.

Roll on

Real time inline applicator with lifting cylinder and pinch roller.

Roll on

Mechanical dispensing module, printed labels are in the dispense buffer.

Label transfer method	3200 Tamp		3100 Blow	4200 Tamp	1400 Roll on	5100 Roll on
Label width mm	8 – 112		10 - 112	5 – 112	50 – 112	25 – 112
Label height mm	5 – 80		10 - 80	4 – 20	100 – 250	20 – 200
Stroke of tamp mm	10		–	100 – 400	100 – 400	–
Compressed air supply bar	5 – 6			5 – 6	5 – 6	–
Requirements on labeling surface	flat			flat	flat/cylindrical	flat
for transfer printers						
Hermes 4F - label outlet left (L)			■	■	■	■
Hermes 4R - label outlet right (R)	–		–	■	■	■
Hermes 5F - label outlet left (L)	■		■	■	■	■
Hermes 5R - label outlet right (R)	–		–	■	■	■
Product height						
variabel	–		■	–	–	–
fixed	■		–	■	■	■
Product						
fixed	■	■	■	–	–	–
in motion	–	■	–	■	■	■
in rotation	–	–	–	■	–	–
Labeling direction						
vertical from above	–	–	■	■	■	■
vertical from below	■	–	■	■	■	■
horizontal	■	■	■	■	■	■
around corner	–	–	–	–	–	–

Consumables

Ribbons

Every label printer needs labels and ribbon. Standard sizes are available from stock. Additionally, we can accommodate almost any custom requirement.



Ribbons

Ribbons are available in wax, resin and resin/wax and also in color. Our stock keeps different widths of various types from 25 mm up to 220 mm. The standard dimension measures a length of 360 m. On request also available with a length of 450 m.

External Rewinder

ER-Series

With dispensers you can use printed labels on rolls. With the external rewinder labels can be rolled up after printing.



ER-Series

These devices are fitted with an own power supply and can be used for all transfer printers also from other manufacturers. The dancer arm ensures a permanent haul over the whole roll diameter.

Label Dispenser

HS 150

All current types of adhesive labels can be simply and quickly dispensed by the HS 150 Label Dispenser. Each time a label is removed the next one is automatically brought into position.



HS 150

As a result to the powerful motor, label rolls can be processed up to a diameter of 240 mm and a width of 150 mm. The built-in Counter indicates the continually updated total number of labels already dispensed.

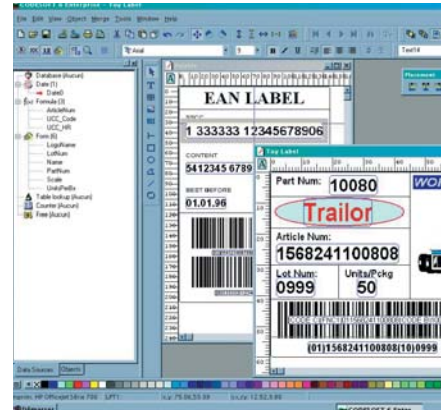
former description	ER4/200 R200	ER4/300 -	ER6/300 R170	ER8/300 R220
Width of material up to mm	120	120	180	232
Roll diameter mm	200	300	300	300
Core diameter mm	40 76			
with/without cardboard core				
Winding direction	outside or inside			
Winding speed up to mm/s	300		250	200
Power supply	100 – 240 V ~ 50/60 Hz, PFC			
Operating temperature	10 – 35 °C			
Humidity	30 – 85%			
Safety regulations	CE, FCC class 1			
Dimensions				
Height mm	280	350	350	350
Widht mm	260	280	340	395
Depth mm	270	390	390	390

For labels	HS 150
Label width mm	12 – 150
Label height mm	15 – 300
Roll diameter max. mm	240
Winding direction	outside
Core diameter min. mm	38.1
Feed supply rate mm/s	40 – 100
Diameter for backing paper max. mm	100
Power supply	100 – 240 V ~ 50/60 Hz
Operating temperature	10 – 35 °C
Humidity	30 – 85%
Safety regulations	CE, FCC class 1
Dimensions	
Height mm	188
Width mm	250
Depth mm	240

Optimally suited Label software

It is not easy to find the right barcode label software, therefore, we have provided you a choice to help you make your decision easier.

The programs are current and versatile, and always adapting to the customers requests and the industries needs. Different customer requirements can be satisfied with different software versions.



cablabe

cablabe is the ideal cost effective software for creating and printing labels especially for cab printers. The ease of use and efficient functionality enable you to create and print complex labels in less time.

cablabe Advanced

A versatile beginner version that generates labels with text, barcodes, graphics and even more elaborate use. The cablabe advanced version provides maximum flexibility through basic functionality.

cablabe Professional

In addition to the basic features, this version includes database support (ODBC, OIL DB and ASCII), and wizards to guide you through complex tasks such as the creation of UCC/EAN 128 Barcodes.

cablabe Expert

With the ability to grow as your requirements grow, cablabe Expert provides you with maximum control and integration functions such as the ability to use ActiveX interfacing and the HTML form generator.

Codesoft

Codesoft supports all popular thermal and thermal transfer printers. This provides you and your company maximum flexibility. Based on the software compatibility a change from cablabe to Codesoft is possible at any time on demand.

Codesoft Sprint

Equivalent to the functionality of cablabe Advanced.

Codesoft Premier

Equivalent to the functionality of cablabe Professional.

Codesoft Enterprise

Equivalent to the functionality of cablabe Expert.

Codesoft Network

The network version for 5, 10, 25 or 50 user.

Our range of scanners meets the highest demands with regard to reliability and strength in design. Whether it concerns production or warehouse, transport or logistics - cab scanners are reliable and safe under the toughest conditions.



hc10

Economical CCD scanner

For all linear barcodes simply connected as keyboard wedge or serial RS232.



hc12

Midrange CCD scanner

High speed scanning with 200 scans per second.



hc20

Linear barcodes and PDF 417 CCD scanner

For keyboard wedge or serial RS232.

	hc10	hc12	hc20
Optics	CCD-Diode		
Scanning system	2048 pixel CCD		
Scans/s	50	200	200
Printing contrast (PCS) min. %	30		
Resolution mil/mm	5 / 0,13	4 / 0,10	4 / 0,10
Range mm	50	300	75
Ambient light up to Lux	20.000	70.000	20.000
Linear barcodes	all standard barcodes		
2D-Barcode			PDF 417
Interface			
Keyboard PS2	<input checked="" type="checkbox"/>		
USB	<input type="checkbox"/>		
Serial RS232 with power supply 230 V~ / 50 Hz	<input type="checkbox"/>		
Operating temperature °C	0 up to 40		
Storage temperature °C	-40 up to 60		
Humidity not condensing %	5 up to 90		
Drop on concrete m	1	1,5	1,0
Safety regulation	CE, FCC, Class A		
acc. protection class	IP 42		
Height x width x depth mm	146 x 89 x 115,8	182 x 74 x 115,8	146 x 89 x 115,8
Weight (without cable) g	150	166	150

Marking Laser

Nd:YAG-Laser

The air-cooled, diode-pumped Nd:YAG-Laser sets new standards in the scope of the laser marking technology. Due to its high beam quality and excellent pulse peak power the laser is superior for use of variable marking of most different materials with a resolution of up to 1000 dpi.

The laser is most suitable for marking materials like steel, aluminum, plastics, PCB's and much more. Laser source and power supply are integrated in one robust common unit. Running costs amounting to less than 2 Cents/hour make the laser unique in its field.



The world-wide smallest marking laser in its class



With safety housing

For manual marking of individual parts in single or multiple order. Fast set-up due to electrical driven z-axis and semi-automatic focus-finder.



With laser label marker

For the fully-automatic marking and cutting of two-layer acrylic label material. Optionally with rewinder or cutter for 'family sheets'.



With type plate marker

For the fully-automatic marking and storing of flat materials like steel, aluminum, plastics, etc.

Laser source	Diode-pumped solid state laser (Nd:YAG)			Laser protection class 1
Laser protection class	4			Electrical z-axis with stepper motor drive
Printing resolution dpi	1000	725	500	Max. diameter of label roll: 200 mm
Marking area up to mm	70 x 70	110 x 110	180 x 180	Max. width of label: 120 mm
Pilot laser	■			Max. weight: 160 g/m ²
Serial RS232	■			Optionally with re-winder or cutter
PLC Interface	■			Optional support for continuous labels or die-cut label rolls because by label sensor
Turnable scanning head	■			Indicator light showing laser operational status
For marking materials like	steel, aluminum, copper, plastics, etc.			Integrated vacuum piping may be connected to an external fume extractor
Linear barcodes	2 of 5, CODE 39, CODE 93, CODE 128 A, B, C, Codabar, EAN 8, 13, EAN/UCC 128			Maximum product height 150 mm (with lens F-Theta 163)
2D-barcodes	Data Matrix, PDF 417			Integrated vacuum piping may be connected to an external fume extractor
Marking software	■			Dimensions including laser 610 x 440 x 525 mm
Three different focusing lenses	□			Dimensions including laser 580 x 800 x 510 mm
Vertically adjustable z-axis	□			Dimensions including laser 680 x 430 x 690 mm
Laser safety housing	□			
Turning table 2x180°	□			
Fume extractor	□			
Customized adaption	□			
Wide range power supply	85 - 240 V~ 50/60 Hz			
Dimensions (H x W x D) in mm	220 x 160 x 583			



cab Deutschland

cab-Produkttechnik
GmbH & Co KG

Postfach 1904
D-76007 Karlsruhe
Wilhelm-Schickard-Str. 14
D-76131 Karlsruhe
Germany

Telefon +49 721 6626-0
Telefax +49 721 6626-249

www.cabgmbh.com
info@cabgmbh.com

All specifications about delivery, design and technical data are given to the best of our current knowledge and are subject to change without prior notice.

cab France

cab technologies s.à.r.l.
BP 20
Z.A. Nord du Val de Moder
F-67350 Niedermodern
France

Téléphone +33 388 722 501
Télécopie +33 388 722 502

www.cabgmbh.com
info@cab-technologies.fr

cab USA

cab Technology Inc.
90 Progress Avenue Unit 2
Tyngsboro MA, 01879
USA

Phone +1 978 649 0293
Fax +1 978 649 0294

www.cabtechn.com
info@cabtechn.com

cab España

cab España S.L.
c/ Riera Figuera Major, 21 bajos
E-08304 Mataró (Barcelona)
España

Teléfono +34 937 414 605
Telefax +34 937 414 731

www.cabgmbh.com
info@cabsl.com

cab Russia

OOO cab Technology
ul. Spiridonovka 16, stroenie 1
RUS-123001 Moscow
Russia

Phone +7 095 937 38 79
Fax +7 095 202 03 15

www.cabgmbh.com
cabrus@co.ru

Representatives in other countries on request.